

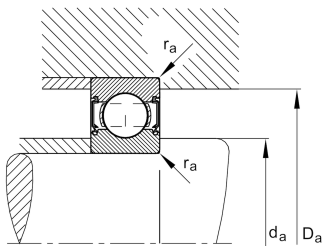
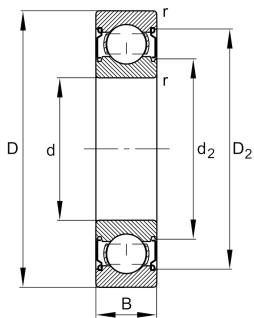
**FAG****HC6310-C-2Z-L207-C3**

## Deep groove ball bearing

Deep groove ball bearing HC63...-C-2Z,  
Hybrid bearing, single row, Generation C,  
shields, steel sheet metal cage

Schaeffler ID:  
0974620980030

## Technical information



## Your current product variant

Material Bearing	HC	Hybrid bearing, rolling elements ceramic, bearing rings made of steel
Changed internal design	C	GenerationC
Sealing	2Z	Non-contact shield on both sides
Cage	JN	Steel sheet metal
Tolerance class	P6	Class6 (P6), better than PN
Dimensional / heat stabilization	S0	Rings dimensional stabilized up to 150°
Lubricant	L207	low noise high-temperature grease, interchangeable with grease L069
Radial internal clearance	C3 (Group 3)	Internal clearance larger than CN
Bore type	Z	Cylindrical

## Main Dimensions &amp; Performance Data

d	50 mm	Bore diameter
D	110 mm	Outside diameter
B	27 mm	Width
C <sub>r</sub>	67.000 N	Basic dynamic load rating, radial
C <sub>0r</sub>	36.500 N	Basic static load rating, radial
C <sub>ur</sub>	1.910 N	Fatigue load limit, radial
n <sub>G</sub>	9.700 1/min	Limiting speed
n <sub>gr</sub>	8.400 1/min	Reference speed
≈m	0,96 kg	Weight



Mounting dimensions

$d_{a\ min}$	61 mm	Minimum diameter shaft shoulder
$D_{a\ max}$	99 mm	Maximum diameter of housing shoulder
$r_{a\ max}$	2 mm	Maximum fillet radius

Dimensions

$r_{\min}$	2 mm	Minimum chamfer dimension
$D_1$	92,1 mm	Shoulder diameter outer ring
$D_2$	95,22 mm	Caliber diameter outer ring
$d_1$	68,64 mm	Shoulder diameter inner ring
$d_2$	66,74 mm	Caliber diameter inner ring

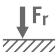






Temperature range

$T_{\min}$	-30 °C	Operating temperature min.
$T_{\max}$	150 °C	Operating temperature max.

Calculation factors

$f_0$	12,6	Calculation factor
-------	------	--------------------

Characteristics

	Radial load
	Axial load in one direction
	Axial load in two directions
	Lifetime lubrication, freedom from maintenance
	Grease Lubrication
	Sealed on both sides
	Current insulated